

NR ELHADEDY PORTFOLIO

• Believing in the Power of Design, Building the World We Aspire For



Who are WE?

We are an international architecture studio that specializes in investment projects. We work closely with investors and real estate developers across commercial, residential, administrative, healthcare, and recreational sectors.

Our approach is founded on bold creativity and innovative solutions. We see possibilities in every challenge. Our goal is to push boundaries and create spaces that serve a purpose, address needs, and provide new ways for people to live, work, and interact.

IN -DEX

- 01 Who are we ?
- 02 Why Us ?
- 03 What We Stand For ?
- 04 How can we help you ?
- 05 Portfolio
- 06 How to get started ?

Egypt

Our projects in Egypt vary from medical, commercial, residential and educational.

Libya

Luxurious villas and a small hotel design

Sudan

A mega project in Khartoum & a luxurious residential complex with a great Nile view.

Jordan

A conceptual vision for Jordan & KSA land airport with Ehalf Consultant

Turkey

Luxurious villas and a small hotel design

Bahrain

Some interior designs and roof garden designs

Iraq

A luxury medical center at Najaf City

Qatar

A commercial building concept design and interior design

UAE

Residential towers and interior design

Morocco

A mega mixed-use project in Casablanca

KSA

Different commercial, residential projects & a medical tower concept.

Kenya

Hotel with small studio apartments and a distinguished orientation

Australia

A small resort in the heart of the forest

USA

California observatory project in Big Sur

WHY US

What makes us unique is our ability to uncover hidden potential in every project. We go beyond basic functionality to create spaces that exceed expectations. Our tailored solutions transform limitations into new opportunities based on the project's specific context, requirements, and investment goals.

Our distinctive approach includes:

- Designing to increase property value through innovative ideas
- Ensuring investments achieve maximum potential
- Balancing exceptional aesthetics with practical functionality
- Prioritizing sustainable, human-centric design
- Focusing on both immediate and long-term impact



Casablanca Twisting Towers

A sleek 10,000 sqm mixed-use gem in Morocco, featuring a commercial complex, business center, 5-star hotel, and residential building. Our design maximizes efficiency, minimizes environmental impact, and delivers a visually stunning experience for residents and visitors alike.



The Wave

The Wave, located on a prime 10,000 m² plot in the heart of Casablanca, Morocco, are set to become a new architectural landmark in the city. This mixed-use development comprises two identical buildings in size yet distinct in design, seamlessly integrated through an innovative wave-like façade that brings a unique and dynamic aesthetic to the project.



La Cascade De Casablanca

A bold and iconic office building design in Casablanca! Our concept explores the power of horizontality and subtle asymmetry, resulting in two distinct yet complementary structures that redefine the skyline. From the initial sketches to the final design, every line, curve, and detail reflects our vision to create a landmark that seamlessly blends into its surroundings while standing out in a striking, harmonious way.

What We STAND FOR



We see design as an intense, collaborative journey. That's why we're selective about our team and clients. Every project is a true partnership, where clients are integral to the creative process. This ensures each design is not only unique, but perfectly aligned with everyone's vision.

How can we HELP YOU?

In essence, our approach to assisting clients is deeply embedded in our dedication to crafting transformative architectural experiences, ensuring the success of our clients and enhancing the overall experience for end-users.

1 Facilitating Decision-Making

We provide diverse ideas with measurable return on investment plans, helping clarify confusion and guiding the decision-making process toward clearer goals and a risk-free approach.

2 Giving a Market Advantage

We offer architecture that stands out by introducing new innovative ideas aligned with market needs and changes, such as the smart space approach and flexible spaces that adapt to changes.

3 Balancing Construction Cost with Investment Value

Working closely with clients as one team, we integrate design with construction work to save time, achieve cost savings, and ensure effective integration throughout the construction process.



Our PORTFOLIO



La Cascade De Casablanca

An Office building in casablanca morocco

A bold and iconic office building design in Casablanca! Our concept explores the power of horizontality and subtle asymmetry, resulting in two distinct yet complementary structures that redefine the skyline. From the initial sketches to the final design, every line, curve, and detail reflects our vision to create a landmark that seamlessly blends into its surroundings while standing out in a striking, harmonious way.



The Wave:

A Masterpiece of Modern Architecture in Casablanca

The Wave, located on a prime 10,000 m² plot in the heart of Casablanca, Morocco, are set to become a new architectural landmark in the city. This mixed-use development comprises two identical buildings in size yet distinct in design, seamlessly integrated through an innovative wave-like façade that brings a unique and dynamic aesthetic to the project. Innovative and Iconic Design



Sahl Hasheesh Resort

A luxurious resort in Hurghada, Sahl Hasheesh



Introducing Sahl Hasheesh Resort, a luxurious development designed to blend seamlessly with the natural beauty of its surroundings. This project showcases innovative architecture and sustainable practices, offering guests a unique and unforgettable experience. This resort harmoniously combines comfort, elegance, and sustainability. Designed with the guest's experience in mind, each element of the resort reflects meticulous attention to detail and a deep appreciation for nature.



The Twisting Towers

High-end mixed-use development in Casablanca, Morocco

The 10,000 square meter project comprises a commercial complex, a business center, a 5-star hotel, and a residential building, with the north tower containing residential units and the south tower housing the hotel and business center. Our design team faced numerous challenges in creating an iconic architectural landmark that seamlessly integrated the different functions of the towers while minimizing their environmental impact on the surrounding neighborhood. We tested several ideas to ensure that our chosen approach would provide the maximum potential for the project.



West Plaza

Mixed-use development in 6 October City - Egypt



West Plaza is a mixed-use building on area 5200 sq, contains commercial & administration areas, with a distinguished plaza that works as a gate to the basement commercial areas.
The building higher levels have separated offices. The ground and mezzanine level contains 7 banks and two anchor restaurants with a panoramic view of the plaza.



Sudan Residential Complex

Residential development in Sudanese capital, Khartoum



Sudan Residential Complex is a high-end residential project in the Sudanese capital, Khartoum. , the complex waterfront has several defining features. and the most important one is breaking down the facade of the development into various common spaces, terraces, and gardens. A simple solution that places social relations between the residents and the public at the very center.

Encouraging human interaction to be an essential part of the facade design is the most significant element that brings architecture to life, "So the statement that we hoped to achieve through this waterfront is simply a metaphor that a luxurious project is not necessarily an isolated, separated and enveloped building. It still could promote social interaction, openings, and welcoming atmosphere, it could easily be merged with the outside yet maintains its main requirements."



MEDICAL DESTINATION

Medical center in Obour city , Egypt



located in El-Obour city, Egypt. The building contains a comprehensive medical center and a commercial outdoor area at the project central green court. The challenge was to separate the two main functions, and yet have one coherent design that merges all activities in harmony.

Another challenge was to highly concentrate on the building functional efficiency as well as give the facade a new dynamic character that is attractive and unique.



Centro Mall

Commercial plaza located in the heart of New Cairo



The project occupies a 5,000 square meter area and features a modern and attractive facade that complements its surroundings. The mall's design takes advantage of the site's natural features, including its beautiful park view, to provide visitors with a truly immersive experience.

The ground floor commercial plaza offers a range of shops, restaurants, and cafes, while the typical floors offer a range of office units for businesses of all sizes. The rooftop entertainment area is the perfect place to relax and unwind, with stunning views of the surrounding area and plenty of space for visitors to enjoy.

At our architectural design firm, we were responsible for developing the facade design for the Centro Mall. Our aim was to create a design that was both modern and attractive while keeping costs low and without compromising on the aesthetic of the building. We're proud to have played a part in bringing this project to life and to have delivered a cost-effective facade design that takes advantage of the site's features.



Crystal City

Residential compound in new capital in Cairo



The crystal city is the conceptual idea for a residential compound in new capital in Cairo, The project is located on an area of 138,096 sqm, The project comprises of residential buildings, a strip mall, and a recreational central area.

“a human interaction could not be forced it could only be welcomed and influenced by the built environment”

We saw this project as a chance to make living more fun, interesting, and peaceful. A concept that introduces beauty not just in its visible aspects but the beauty of living a healthy natural social life that uplifts the spiritual aspect.



Triplet Towers

High-end mixed-use development in Casablanca, Morocco



The 10,000 square meter project comprises a commercial complex, a business center, a 5-star hotel, and a residential building, with the north tower containing residential units and the south tower housing the hotel and business center.

Our design team faced numerous challenges in creating an iconic architectural landmark that seamlessly integrated the different functions of the towers while minimizing their environmental impact on the surrounding neighborhood. We tested several ideas to ensure that our chosen approach would provide the maximum potential for the project.



UMC MEDICAL CENTER

Medical center in New Cairo , Egypt



UMC is located in heart of new Cairo in south academy district service nearly north 90th on area 5000 sq. It's a new design concept that stands out from all the new modern architecture in new cairo in a smooth wavy lines that create a homogeneous facade and entrance.

The physical appearance of a project could add a huge advantage to a disadvantaged location, by creating a new landmark and unique facade. this tactic was applied in the UMC medical center in New Cairo, Egypt. Its smooth lines create a homogeneous facade and entrance that stands out from all the new modern architecture in New Cairo



BUSINESS PLUS

Administrative Building in New Cairo , Egypt



UMC is located in heart of new Cairo in south academy district service nearly north 90th on area 5000 sq. It's a new design concept that stands out from all the new modern architecture in new cairo in a smooth wavy lines that create a homogeneous facade and entrance.

The physical appearance of a project could add a huge advantage to a disadvantaged location, by creating a new landmark and unique facade. this tactic was applied in the UMC medical center in New Cairo, Egypt. Its smooth lines create a homogeneous facade and entrance that stands out from all the new modern architecture in New Cairo.



JD Headquarter

Transformation of an Existing Villa into JD Headquarters & A Motel

This project involved the renovation of an existing residential villa located on 90 Street, situated on a 661 m² plot. The task? Converting the villa into the headquarters for JD, while maintaining functionality for other uses within the same structure. This transformation was not only functional but also aesthetic, requiring a seamless blend of architectural creativity and respect for the building's existing constraints.

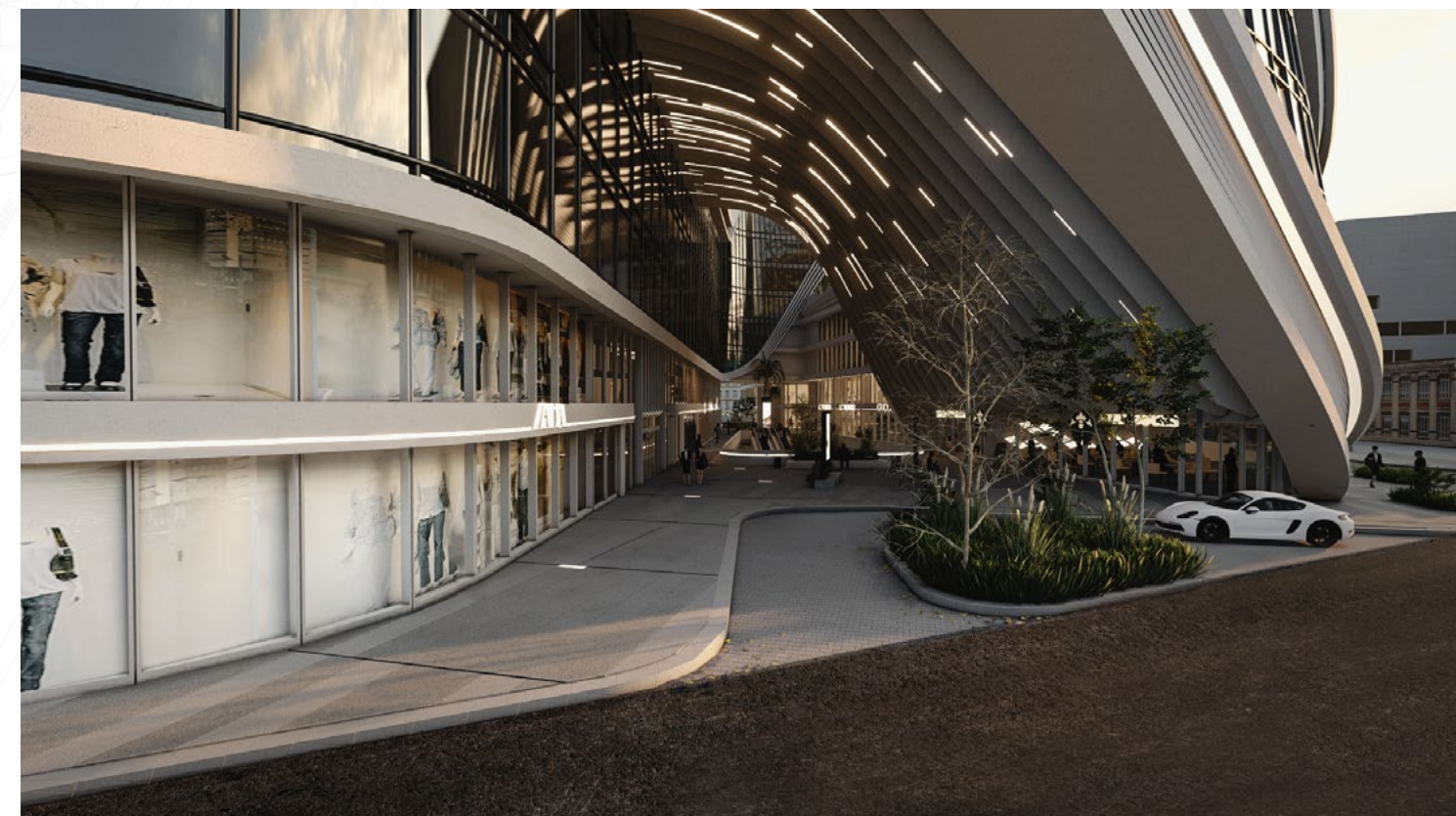


Yen& Yan Towers

High-end mixed-use development in Casablanca, Morocco



The 10,000 square meter project comprises a commercial complex, a business center, a 5-star hotel, and a residential building, with the north tower containing residential units and the south tower housing the hotel and business center. Our design team faced numerous challenges in creating an iconic architectural landmark that seamlessly integrated the different functions of the towers while minimizing their environmental impact on the surrounding neighborhood. We tested several ideas to ensure that our chosen approach would provide the maximum potential for the project.



Roots Town

Residential compound in new capital in Cairo



Is a residential project in new administrative capital in Egypt, looking at the local characteristics of the current project on new Cairo and new capital which embraced more traditional approaches, we wanted to add a new dimension that project shall provide. our approach is to give an efficient yet unique and interesting environment to living in which privacy, interaction, and entertainment are equally considered.
The project is located on an area of 138,096 sqm, The project comprises of residential buildings, a strip mall, and a recreational central area.



OZONE MEDICAL CENTER

Medical center in New Cairo , Egypt



Ozone Medical Center is located in New Cairo with a total land area of 829 17 m2. The project consists of four buildings Medical : contains medical clinics three buildings (spaces starting from 37 m 2).

and specialized medical centers and laboratory tests and radiology centers and a number 2 pharmacy. In addition to the fourth building is a full service hospital. And mediates the four buildings area restaurants and cafes (Food Court).



The ZD Villa

The signature villa typology of Sheikh Zayed compound



The LAKE HOUSE | Göl Evi

Nestled in the heart of Turkey



THE SHARP VILLA

A luxurious villa located in Abu-Dhabi, United Arab Emirates



LIBYA HOUSE

Family second home ,located in Libya



Abu Dhabi villa

A luxury villa located in Dubai



The Glass Villa

One story villa in New Cairo, Egypt.



Arabesque Villa

A luxury villa in Sheik Zayed, Egypt



Winter Home

A second home in Ain El Sokna , Egypt



How to
**GET
STARTED**

Mail : info@nrelhadedy.com
www.nrelhadedy.com

Phone: +2-01092704514
Whatsapp : +2-01064439717

/2024



ELHADEDY
A r c h i t e c t s

Address: 3Abd Al Aziz Ali S t ,from Abdel Aziz Fahmy St Heliopolis , Cairo , Egypt
Phone: +01064439717-2 +01092704514-2
Others: info@nrelhadedy.com www.nrelhadedy.com